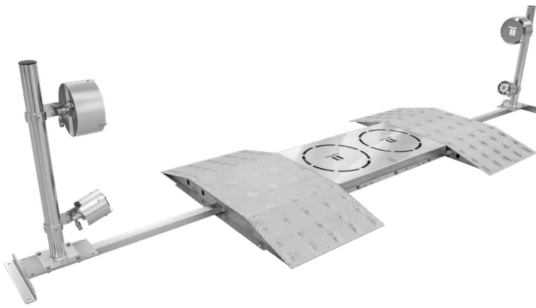
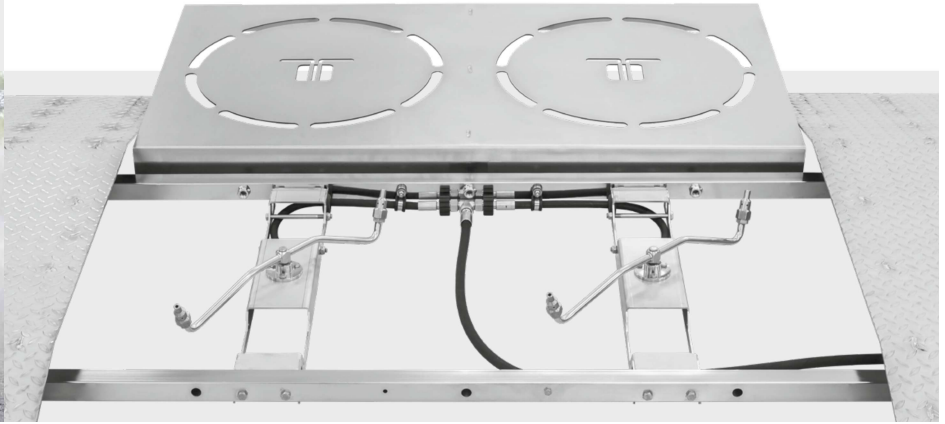


UNDERCARRIAGE CLEANER WITH RAMP

- ✓ Mobile undercarriage cleaning
- ✓ Easy and fast assembly
- ✓ 100% stainless steel
- ✓ Only 4.73" in height



This undercarriage cleaner from Mosmatic is the first of its kind using patented technology and only 4.73" in height. It will help prolong the life of your vehicles and fleets making them safer for service and maintenance. This all stainless constructed mat can easy be assembled with simple tools in minutes and can be anchored or mobile. Easily adapts to pressure washer pump systems from 6 gpm to 20 gpm, works with hot or cold water systems and chemicals from pH 3-12.



Undercarriage Cleaner with Ramp

Name	Part No.	Piece	Length	Width	Height	Weight
Undercarriage Cleaner with Ramp Set-up	80.506	1x	4' 9.6"	16' 5.6"	4.73"	512 lbs

Includes:

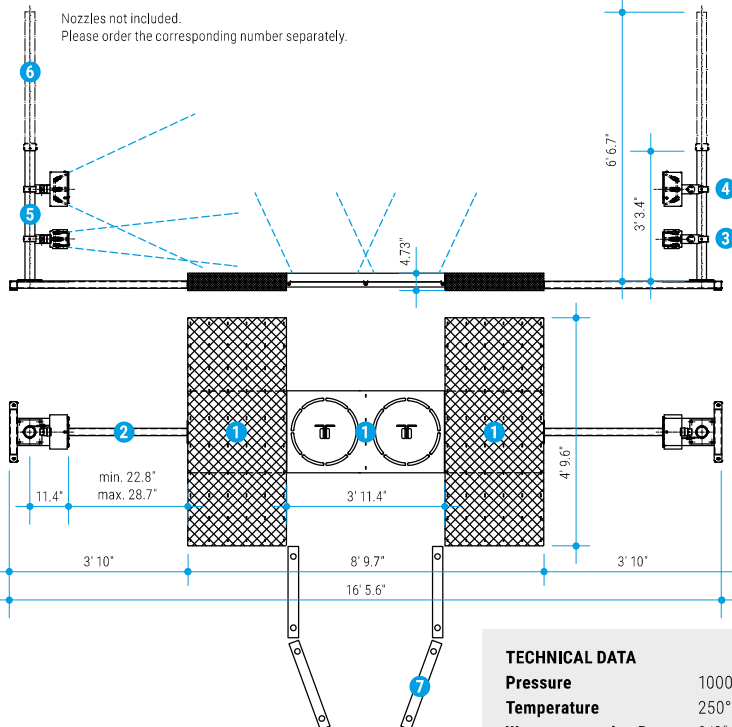
Ramp	80.508	1x	4' 9.6"	8' 9.7"	4.73"	378 lbs	1
Rigger	80.550	2x	4'	1' 3.8"	2.6"	20.9 lbs	2
Low Volume WBP140	84.589	2x	---	---	---	7.7 lbs	3
Low Volume WBP250	84.599	2x	---	---	---	10.6 lbs	4
Stand	903.986	2x	3' 3.4"	---	---	16.1 lbs	5

Accessories:

Extension	84.907	2x	3' 3.4"	---	---	13.2 lbs	6
Collision protection	905.884	1x	2' 10"	6"	4"	17.6 lbs	7
High performance Pump	80.561	1x	3' 8.5"	2' 7.5"	6' 10.3"	1100 lbs	8
Hose kit	80.560	1x	---	---	---	27.6 lbs	8

Consult your local laws for rules and regulations for wastewater runoff.

Our vehicles and fleets are valuable assets that are exposed to the influences of nature, chemicals and pollution. This leads to significant wear and tear on the chassis, wear parts and body. Keeping the undercarriage of your vehicle clean prevents rust and corrosion, reducing cost and prolonging component life.



TECHNICAL DATA

Pressure	1000 psi (7 MPa)
Temperature	250°F
Water connection Ramp	3/8" NPTM
Water connection WBP	4x 3/8" NPTF
Throughput medium	pH 3-12
min. ground clearance	4.8"



Part No. 80.561 High performance Pump, information on request.



Part No. 80.518 Double ramp, information on request.

Legend

M. = metric thrust, ..M = male, F = female, G = gas pipe thrust, R = gas pipe thrust conival, QV = quick connects, SV = profile ring fitting
D = diameter, L = length, NW = nominal width, SW = wrench size, IN = media input, OUT = media output, RS = basic position